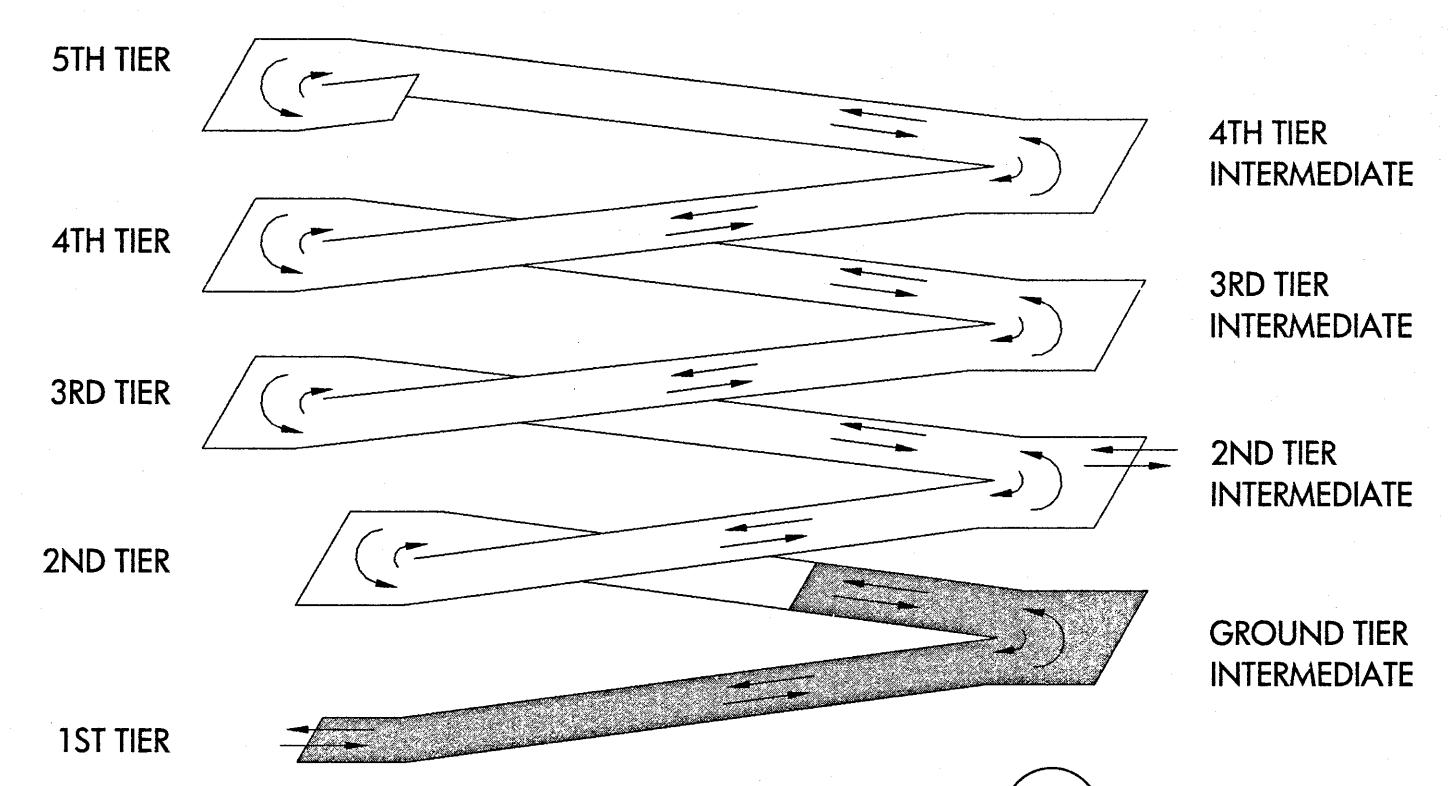
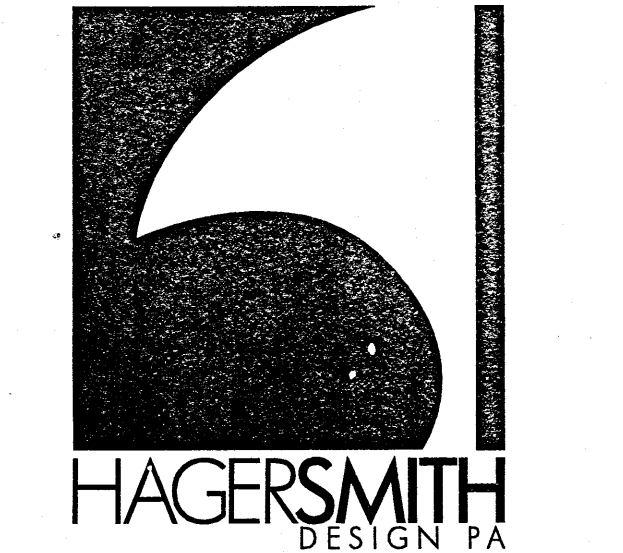
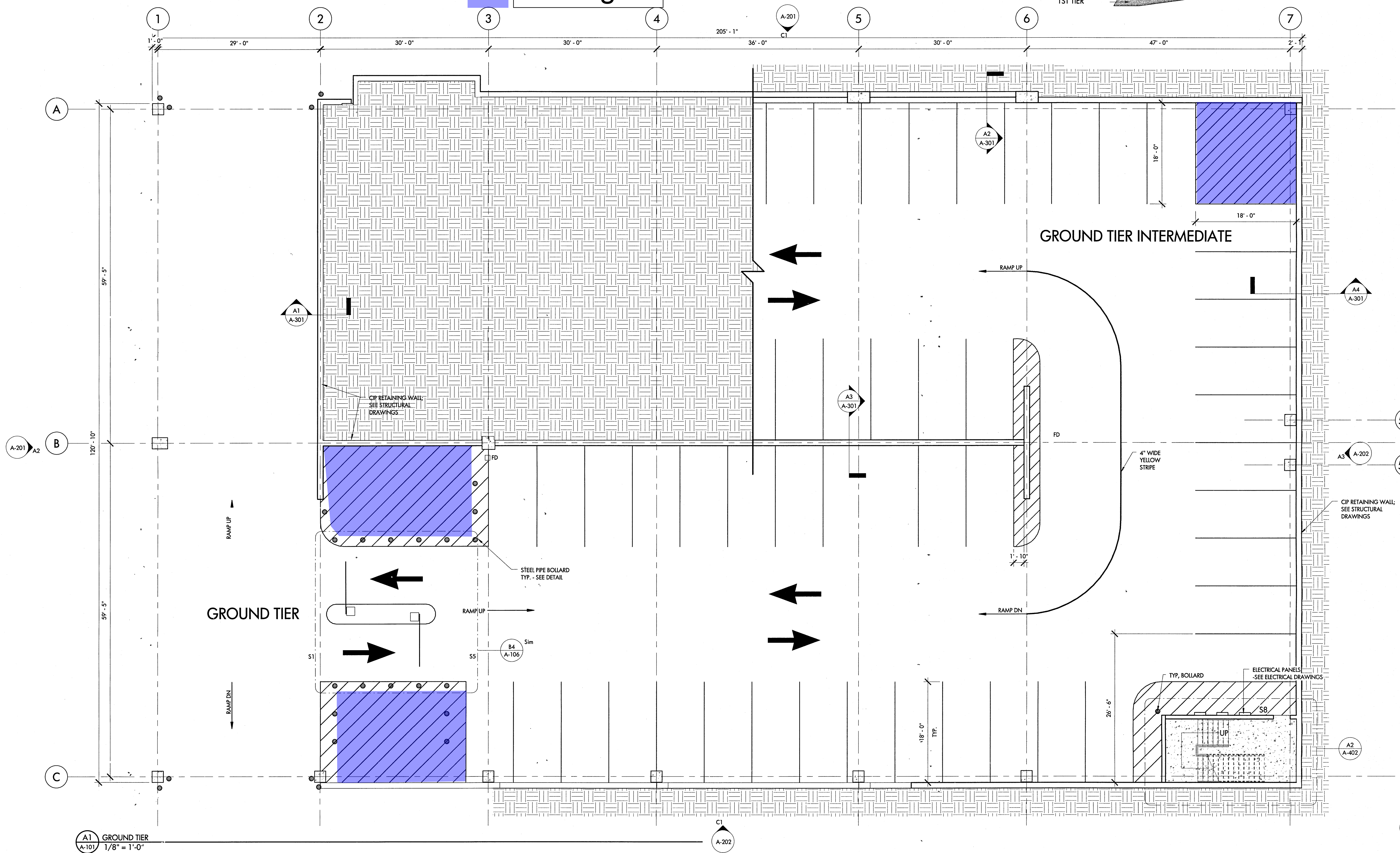


GENERAL NOTES
1. SEE SHEET A501 FOR STRIPING AND SIGNAGE DETAILS

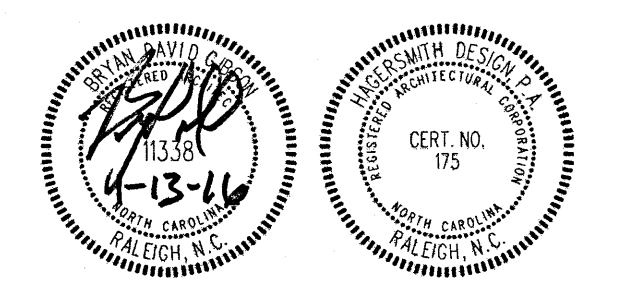


Motorcycle Parking



ARCHITECTURE
LANDSCAPE ARCHITECTURE
PLANNING
INTERIOR DESIGN

PO BOX 1308
300 SOUTH DAWSON STREET
RALEIGH, NORTH CAROLINA 27602
919.821.5547
www.hagersmith.com © Copyright 2016



BNK
BASS, NIXON & KENNEDY, INC.
CONSULTING ENGINEERS
6310 CHAPEL HILL ROAD
RALEIGH, NC 27607
PHONE: 919.851.4422
FAX: 919.851.8968

FLUHRER REED
1101 Haynes Street Suite 207 Raleigh, NC 27604
tel 919 821 7146 fax 919 821 7194 www.fluhrerreed.com

PROJECT 000-000

PARKING DECK AT THE CENTER FOR TECHNOLOGY & INNOVATION
2411 RESEARCH DRIVE
RALEIGH, NC

KEYSTONE CORPORATION
5410 TRINITY ROAD
RALEIGH, NC 27607

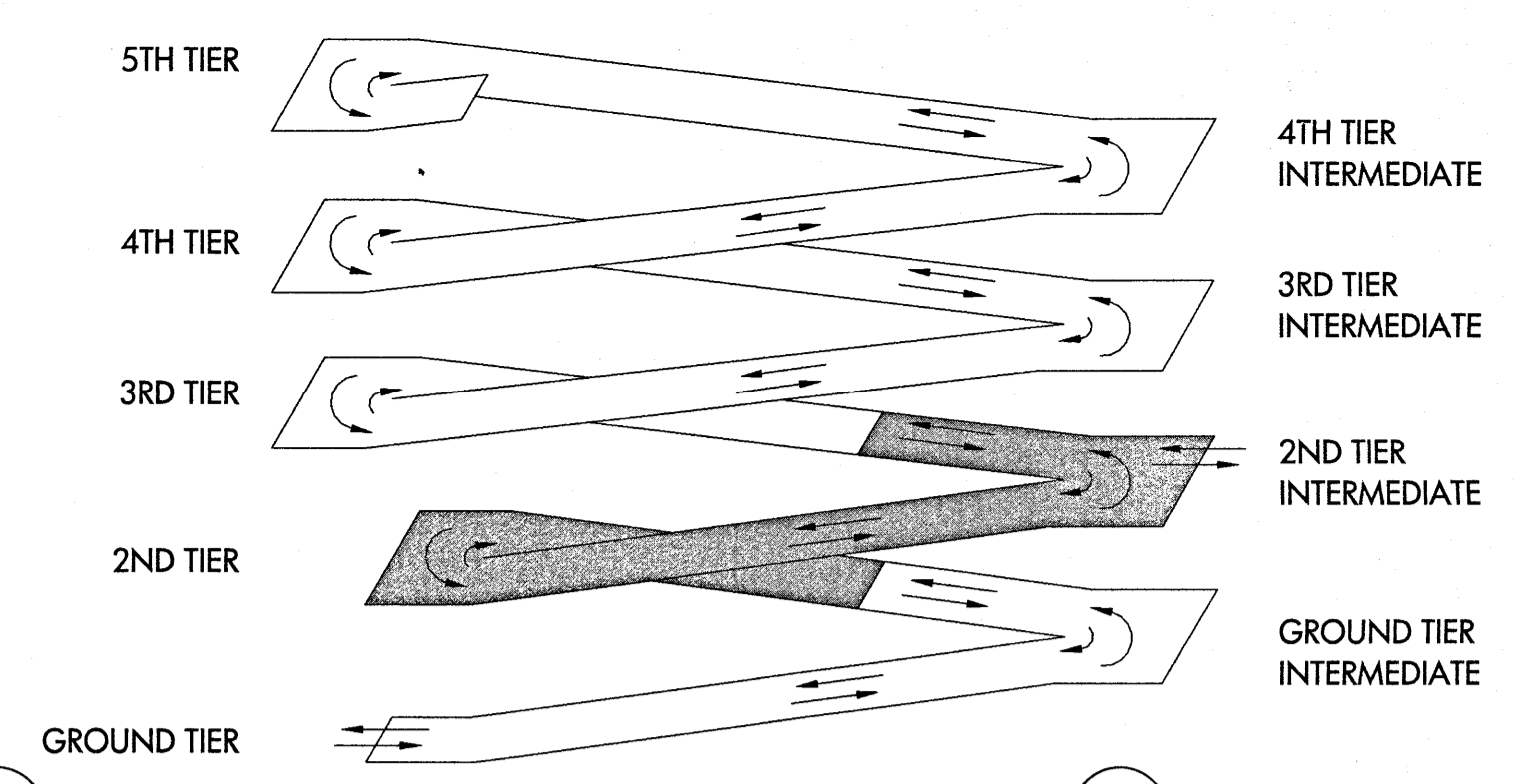
DRAWING TITLE
GROUND TIER PARKING DECK PLAN

REVISIONS	NUMBER	DESCRIPTION	DATE

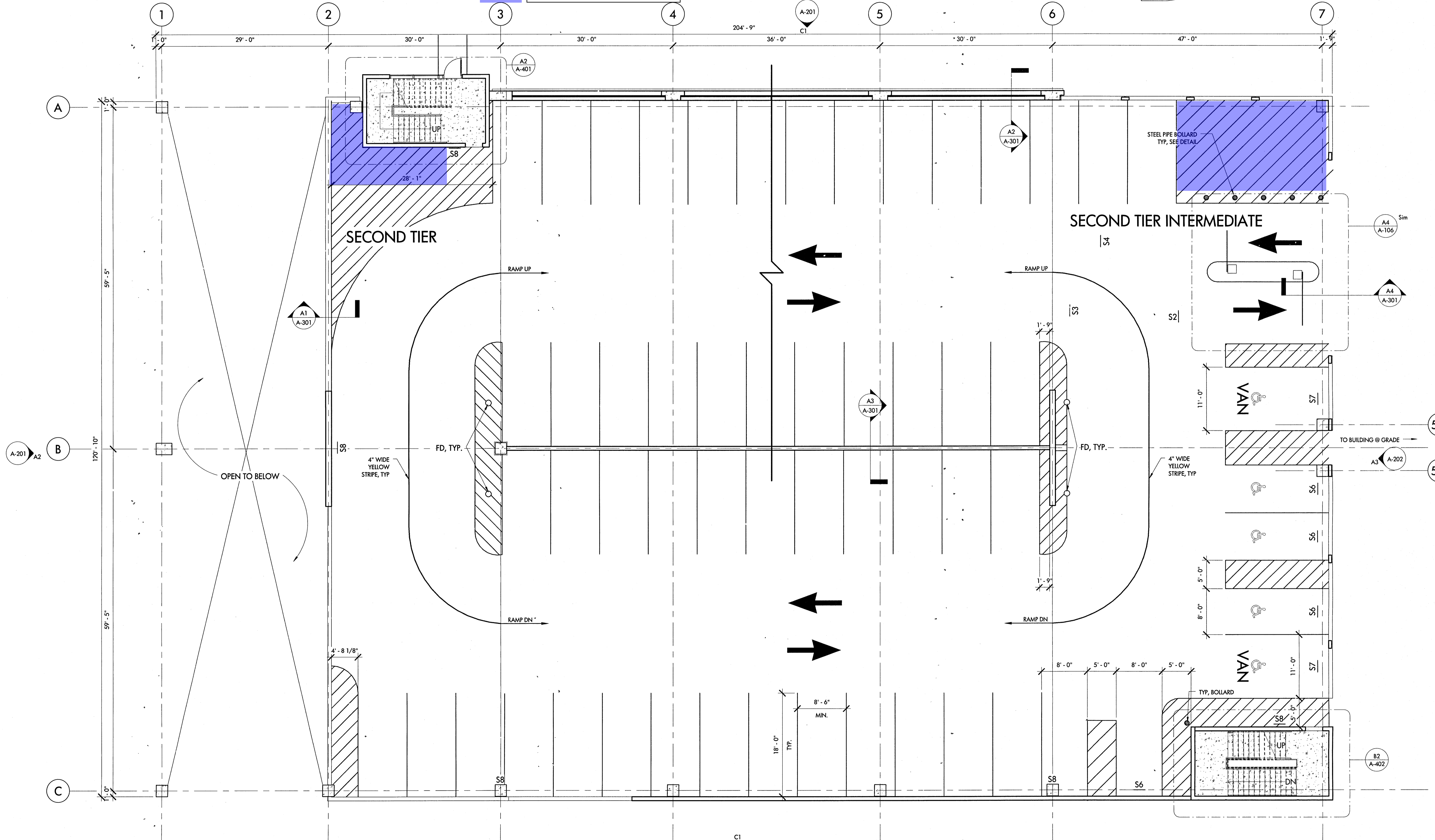
DRAWN BY: ZDB
CHECKED BY: BDG
DATE ISSUED: 1.13.16

A-101
OF

GENERAL NOTES
 1. SEE SHEET A501 FOR STRIPING AND SIGNAGE DETAILS

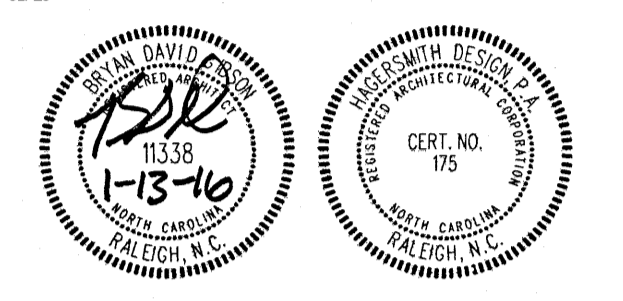


Motorcycle Parking



ARCHITECTURE
 LANDSCAPE ARCHITECTURE
 PLANNING
 INTERIOR DESIGN

PO BOX 1308
 300 SOUTH DAWSON STREET
 RALEIGH, NORTH CAROLINA 27602
 919.821.5547
 www.hagersmith.com © Copyright 2016



ASSOCIATES / CONSULTANTS

BNK
 BASS, NIXON & KENNEDY, INC.
 CONSULTING ENGINEERS
 6310 CHAPEL HILL ROAD
 RALEIGH, NC 27607
 PHONE: 919.851.4422
 FAX: 919.851.8968



1101 Haynes Street Suite 207 Raleigh, NC 27604
 tel 919 821 7146 fax 919 821 7194 www.fluhrerreed.com

PROJECT 000-000

PARKING DECK AT THE CENTER FOR TECHNOLOGY & INNOVATION
 2411 RESEARCH DRIVE
 RALEIGH, NC

CLIENT

KEYSTONE CORPORATION
 5410 TRINITY ROAD
 RALEIGH, NC 27607

DRAWING TITLE
SECOND TIER PARKING DECK PLAN

REVISIONS		
NUMBER	DESCRIPTION	DATE

DRAWN BY ZDB
 CHECKED BY HSD
 DATE ISSUED 1.13.16

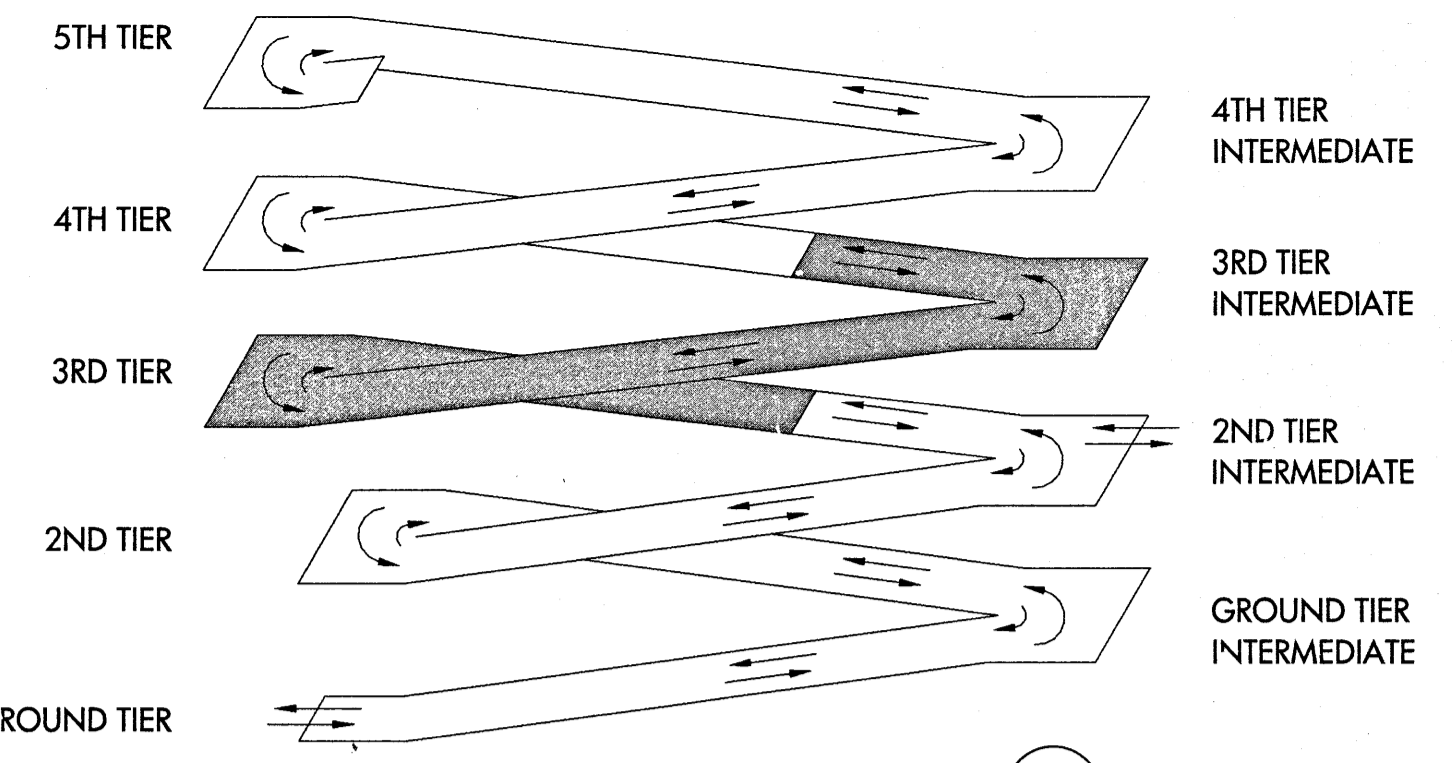
A-102
OF

A1 2ND TIER
 A-102 1/8" = 1'-0"

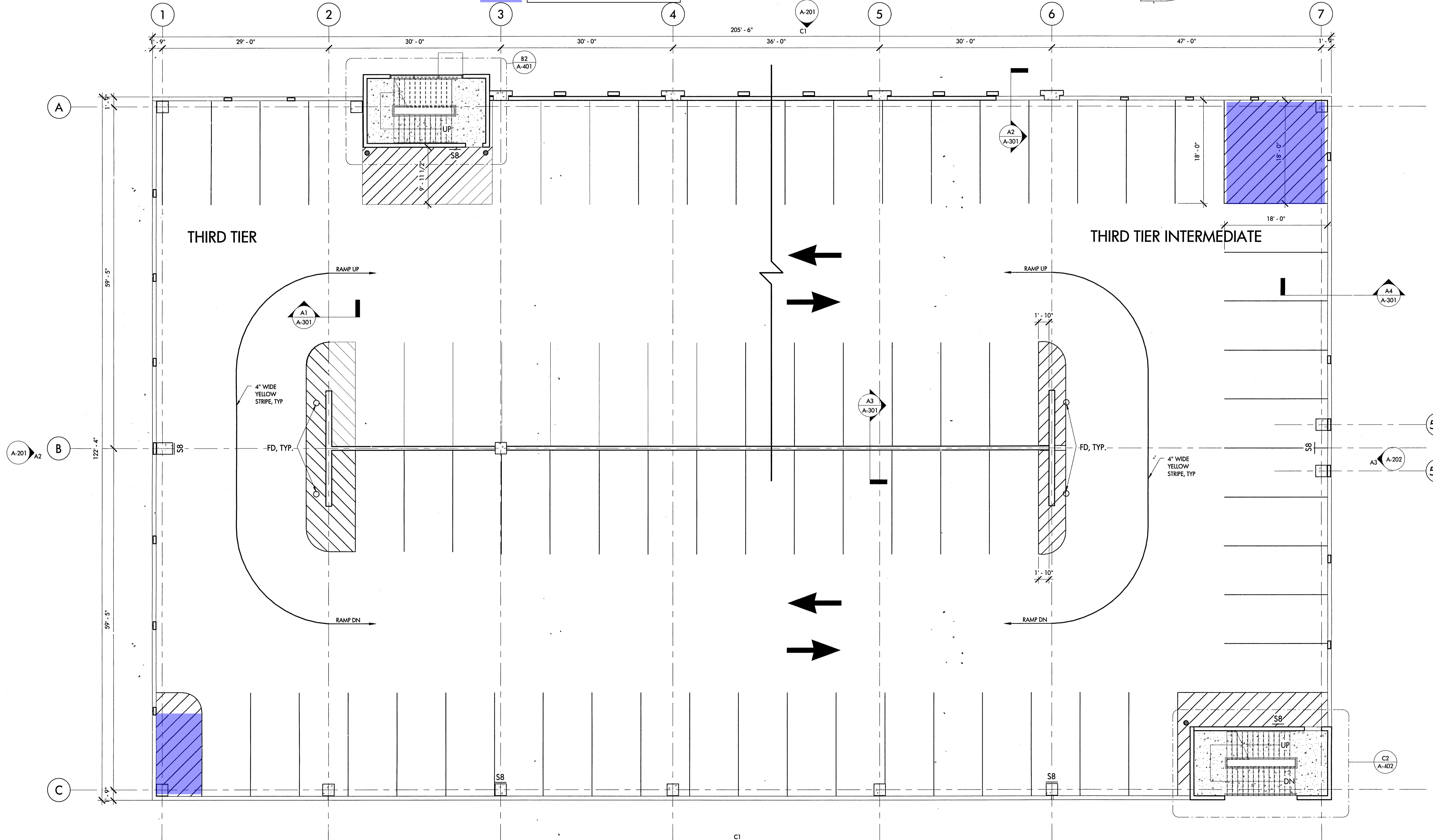
C1



GENERAL NOTES
 1. SEE SHEET A-501 FOR STRIPING AND SIGNAGE DETAILS



Motorcycle Parking



ARCHITECTURE
 LANDSCAPE ARCHITECTURE
 PLANNING
 INTERIOR DESIGN

PO BOX 1308
 300 SOUTH DAWSON STREET
 RALEIGH, NORTH CAROLINA 27602
 919.821.5547
 www.hagersmith.com © Copyright 2016



ASSOCIATES / CONSULTANTS

BNK
 BASS, NIXON & KENNEDY, INC.
 CONSULTING ENGINEERS
 6310 CHAPEL HILL ROAD
 RALEIGH, NC 27607
 PHONE: 919.851.4422
 FAX: 919.851.8968



1101 Haynes Street Suite 207 Raleigh, NC 27604
 tel 919 821 7146 fax 919 821 7194 www.fluhrerreed.com

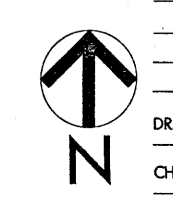
PROJECT 000-000
PARKING DECK AT THE CENTER FOR TECHNOLOGY & INNOVATION
 2411 RESEARCH DRIVE
 RALEIGH, NC

CLIENT
KEYSTONE CORPORATION
 5410 TRINITY ROAD
 RALEIGH, NC 27607

DRAWING TITLE
THIRD TIER PARKING DECK PLAN

REVISIONS		
NUMBER	DESCRIPTION	DATE

DRAWN BY ZDB
 CHECKED BY HSD
 DATE ISSUED 1.13.16



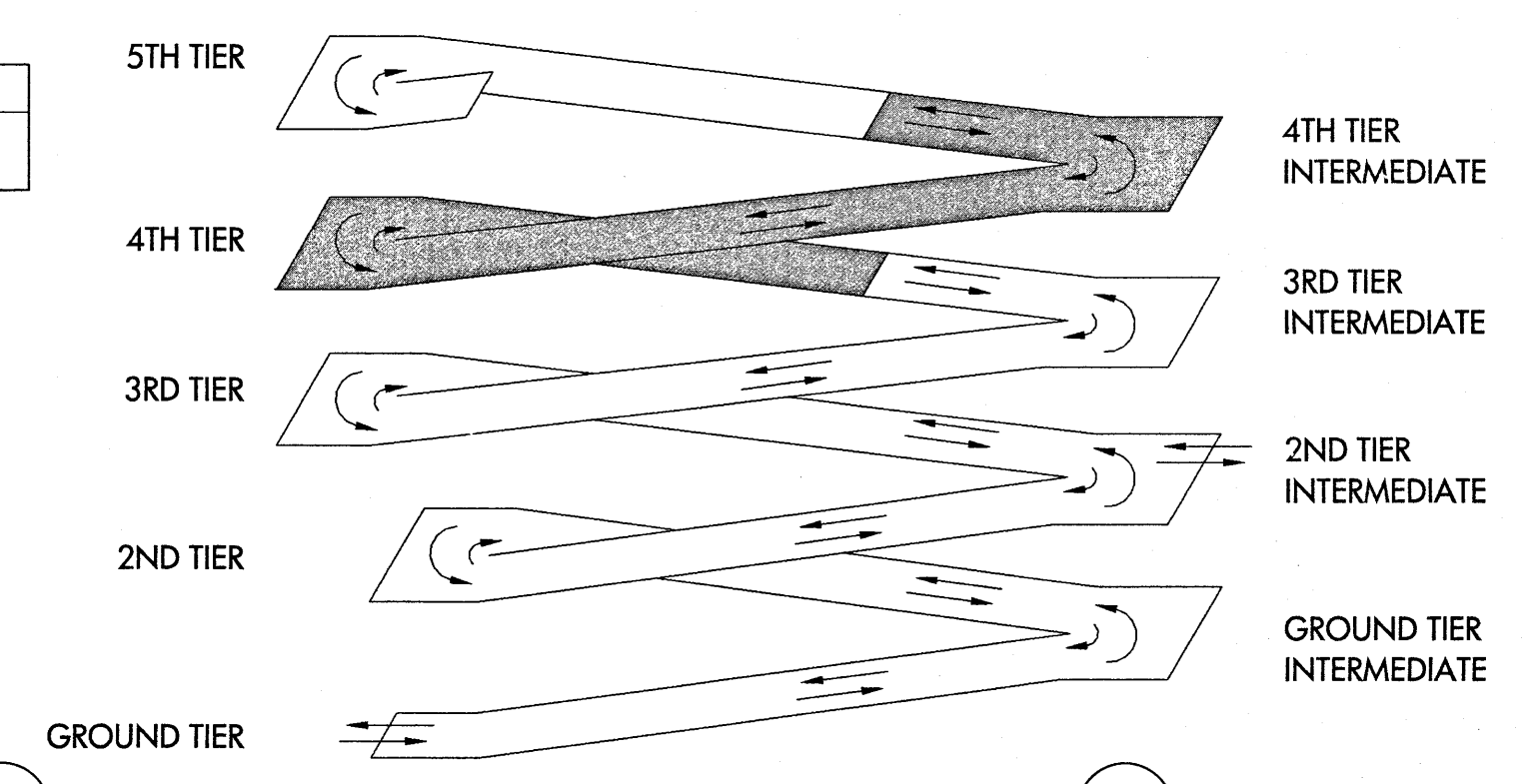
A-103

OF

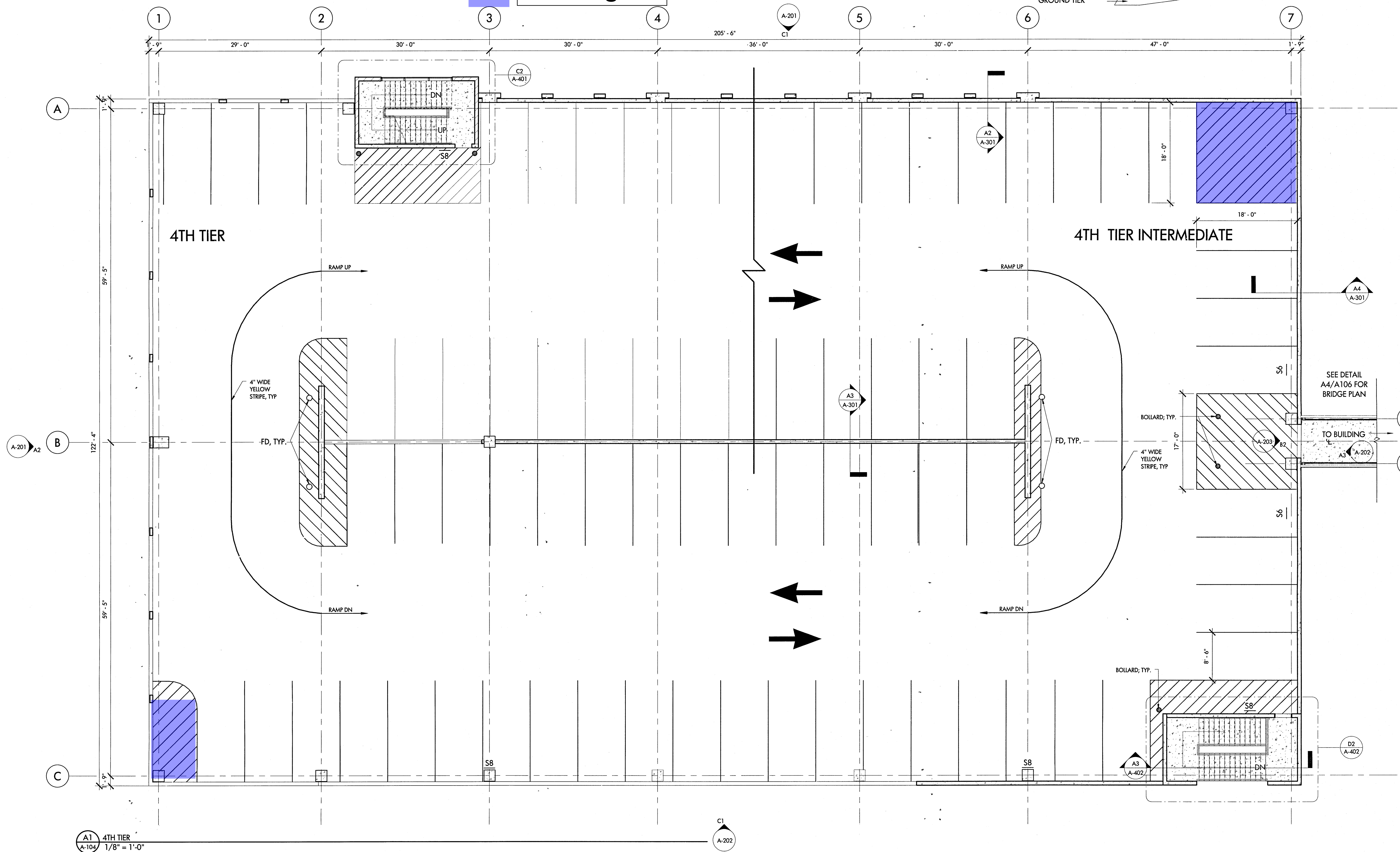
A1 3RD TIER
 A-103 1/8" = 1'-0"

C1
 A-202

GENERAL NOTES
 1. SEE SHEET A501 FOR STRIPING AND SIGNAGE DETAILS



Motorcycle Parking



ARCHITECTURE
 LANDSCAPE ARCHITECTURE
 PLANNING
 INTERIOR DESIGN

PO BOX 1308
 300 SOUTH DAWSON STREET
 RALEIGH, NORTH CAROLINA 27602
 919.821.5547
 www.hagersmith.com © Copyright 2016



ASSOCIATES / CONSULTANTS

BNK
 BASS, NIXON & KENNEDY, INC.
 CONSULTING ENGINEERS

6310 CHAPEL HILL ROAD
 RALEIGH, NC 27607
 PHONE: 919.851.4422
 FAX: 919.851.8968



1101 Haynes Street Suite 207 Raleigh, NC 27604
 tel 919 821 7146 fax 919 821 7194 www.fluhrerreed.com

SEE DETAIL
 A4/A106 FOR
 BRIDGE PLAN

TO BUILDING

PROJECT 000-000

**PARKING DECK AT
 THE CENTER FOR
 TECHNOLOGY &
 INNOVATION**

2411 RESEARCH DRIVE
 RALEIGH, NC

CLIENT

**KEYSTONE
 CORPORATION**

5410 TRINITY ROAD
 RALEIGH, NC 27607

DRAWING TITLE
FOURTH TIER PARKING DECK PLAN

REVISIONS		
NUMBER	DESCRIPTION	DATE

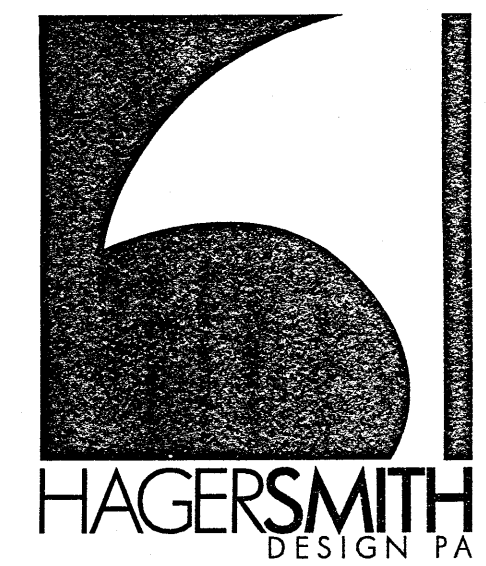
DRAWN BY ZDB
 CHECKED BY HSD
 DATE ISSUED 1.13.16

A-104
OF

A1 4TH TIER
 A-104 1/8" = 1'-0"

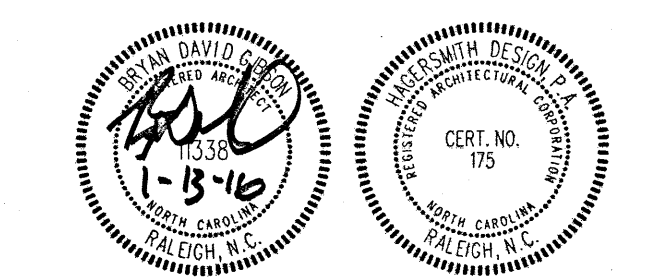
C1
 A-202





ARCHITECTURE
LANDSCAPE ARCHITECTURE
PLANNING
INTERIOR DESIGN

PO BOX 1308
300 SOUTH DAWSON STREET
RALEIGH, NORTH CAROLINA 27602
919.821.5547
www.hagersmith.com © Copyright 2016



ASSOCIATES / CONSULTANTS
BNK
BASS, NIXON & KENNEDY, INC.
CONSULTING ENGINEERS
6310 CHAPEL HILL ROAD
RALEIGH, NC 27607
PHONE: 919.851.4422
FAX: 919.851.8968

FLUHRER REED
1101 Haynes Street Suite 207 Raleigh, NC 27604
tel 919 821 7146 fax 919 821 7194 www.fluhrerreed.com

A-203
A-202
A-201
A-2
A-3
A-301
A-302
A-303
A-4
A-301

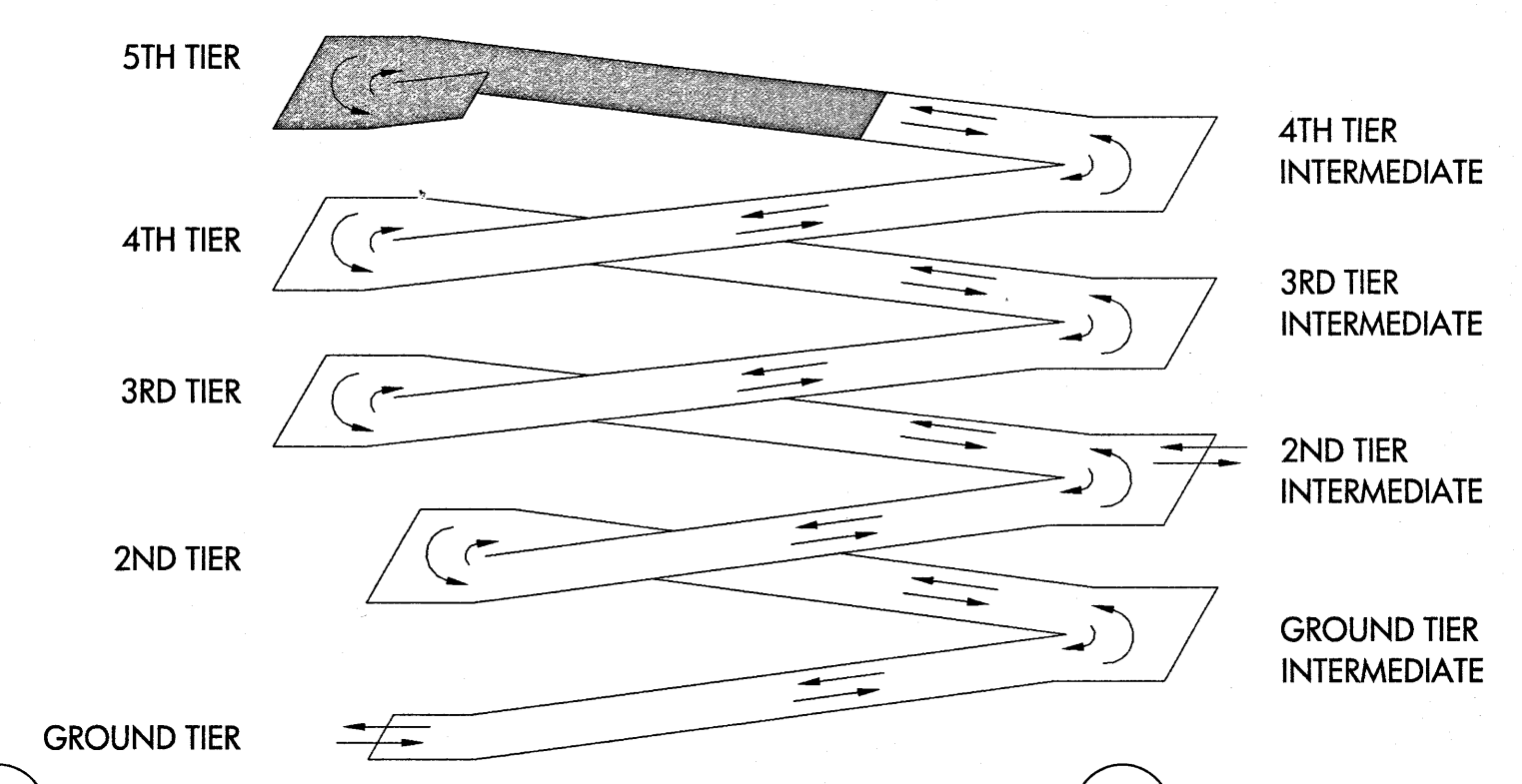
PROJECT 000-000
**PARKING DECK AT
THE CENTER FOR
TECHNOLOGY &
INNOVATION**
2411 RESEARCH DRIVE
RALEIGH, NC

CLIENT
**KEYSTONE
CORPORATION**
5410 TRINITY ROAD
RALEIGH, NC 27607

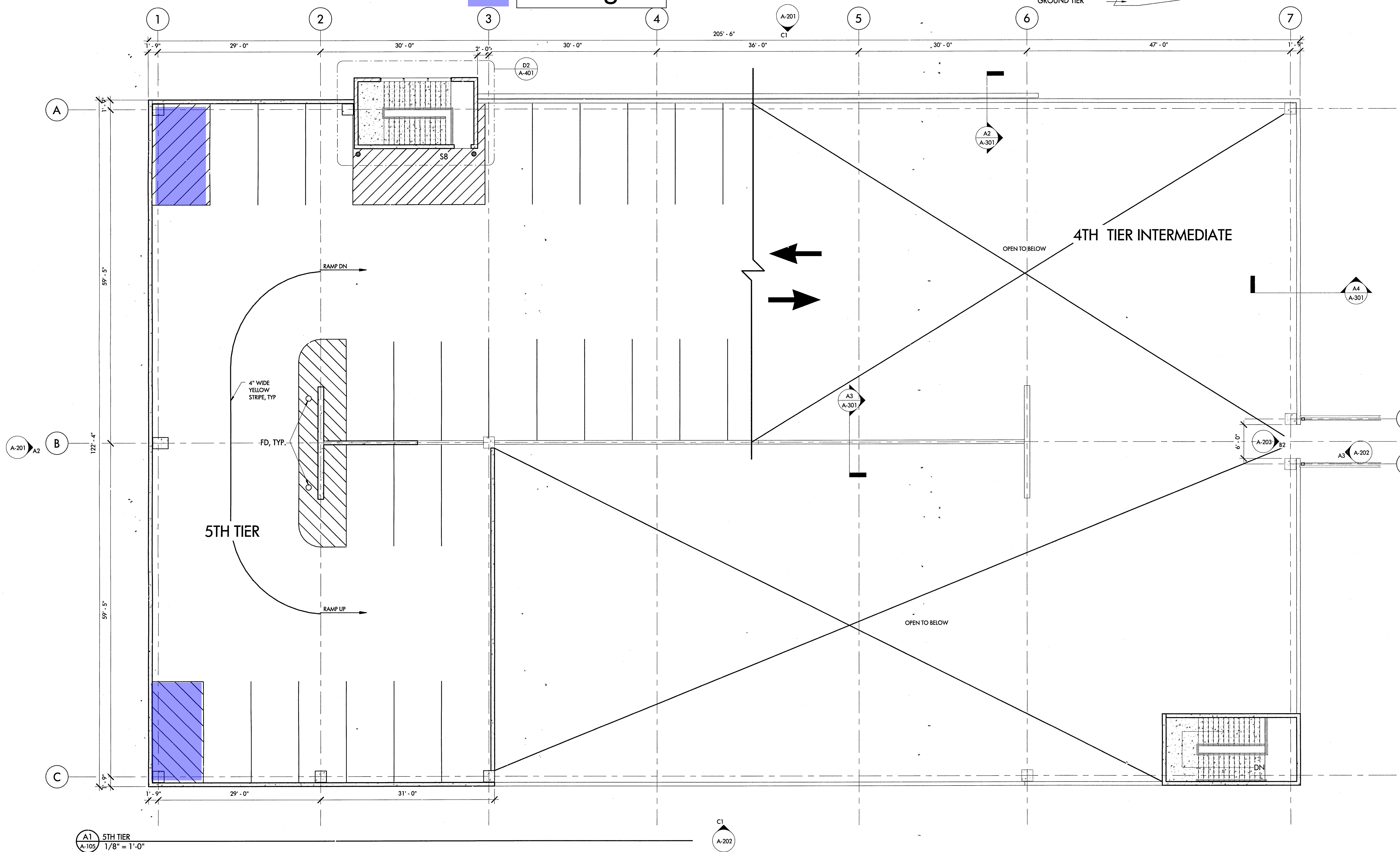
DRAWING TITLE
FIFTH TIER PARKING DECK PLAN

REVISIONS		
NUMBER	DESCRIPTION	DATE

DRAWN BY ZDB
CHECKED BY HSD
DATE ISSUED 1.13.16

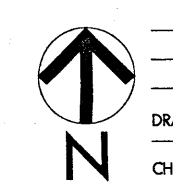


**Motorcycle
Parking**



A1 5TH TIER
A-105 1/8" = 1'-0"

C1
A-202



A-105

OF